

CANINE BODY CONDITION SCORE CHART

How does your dog shape up?

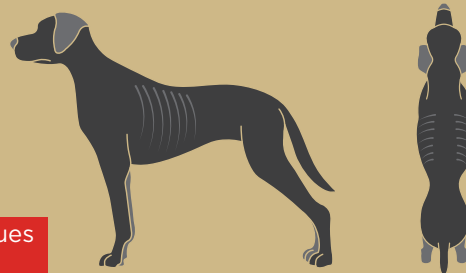
1

Emaciated

Less than 5% Body Fat

- Ribs, spine and pelvis prominent and evident from a distance
- Obvious loss of muscle mass
- Little or no body fat with no fat on tail
- Thin neck and hollow rump

If a dog is being fed according to pack recommendations and continues to present with an emaciated frame, this could be symptomatic of an underlying condition. Seek veterinary advice.



2

Thin

5 - 15% Body Fat

- Ribs, spine and pelvis bones visible and easily felt
- Little body fat and little fat on tail
- Thin neck
- Abdomen tucked up
- Obvious waist when viewed from above

For hard working dogs - this score can be an ideal condition.
For companion dogs - increase their daily food intake by 10-15%.



3

Ideal

16 - 25% Body Fat

- Ribs and spine can be felt, last few ribs may be visible
- Dog should have a waist when viewed from above
- Belly is tucked up when viewed from the side
- Good muscle mass
- Rump well muscled



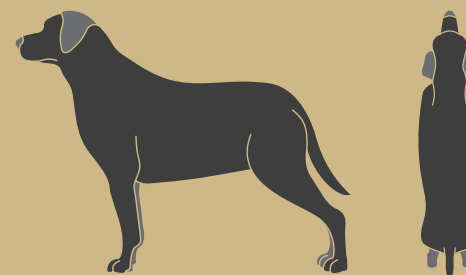
4

Overweight

26 - 35% Body Fat

- Ribs and spine not visible but can be felt
- Fat deposit on tail
- Little or no waist when viewed from above, rounded appearance
- Dog squarish along back line when viewed from the side
- Abdomen not tucked up, may appear rounded underneath

Reduce daily feed intake by 10-15% and avoid giving too many treats until ideal weight range is achieved.



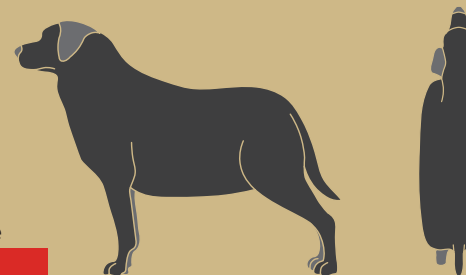
5

Obese

More than 35% Body Fat

- Ribs and spine not visible and difficult to feel
- Tail has obvious fat deposit
- No waist and back broadened when viewed from above
- Belly obviously rounded and possibly distended
- Dog square or round up along back line when viewed from the side

If a dog is being fed according to pack recommendations and continues to gain weight, this could be symptomatic of an underlying condition. Seek veterinary advice.



Follow the feeding guidelines on pack to maintain an ideal weight range for your dog.
A happy, healthy dog loves to work and play and we recommend annual check-ins with your veterinarian.



To arrange a complimentary diet consultation with our nutrition team,
send us an email at hello@cobberdogfood.com.au